



# Hueforia

Colour Development Team of RTP Company

**COLOUR THAT MOVES YOU!**

# 2025



**Welcome to Hueforia, your source for beautifully coloured thermoplastics!**

At Hueforia, we offer a wide range of thermoplastic colour options, including standard and custom colours, universal masterbatches, specialty performance additives, and special effect compounds. We can assist you with colour and material selection, and then produce a thermoplastic compound to your exact product specifications. With more than 40 years of experience, you can rely on the Hueforia team for all your coloured thermoplastic needs.

To spark your imagination, we've curated four coloured thermoplastic collections that are predicted to be top sellers in 2025. From earthy Arid hues to soft Temperate tones, bright Tropical vibes to classic Polar colours... together, we'll find the ideal, coloured thermoplastic material for your product.



*Arid*  
COLLECTION



*Tropical*  
COLLECTION



*Polar*  
COLLECTION



*Temperate*  
COLLECTION

# Arid

COLLECTION

The light, neutral colours of the Arid Collection spark a sense of adventure, exploration, and connection to the earth. These warm, earthy tones are perfect material colour choices for household appliances, consumer goods, and visible plastic components.



**BONE-DRY**  
S-206781 MB 8% | Polysulfone (PSU)



**SANDSTORM**  
S-46239 MB 4% | Polysulfone (PSU)



**SAHARA**  
S-483104 MB 4% | Polysulfone (PSU)



**DESERT CANYON**  
S-903740 MB 8% | Polysulfone (PSU)  
Metallic Large Flake

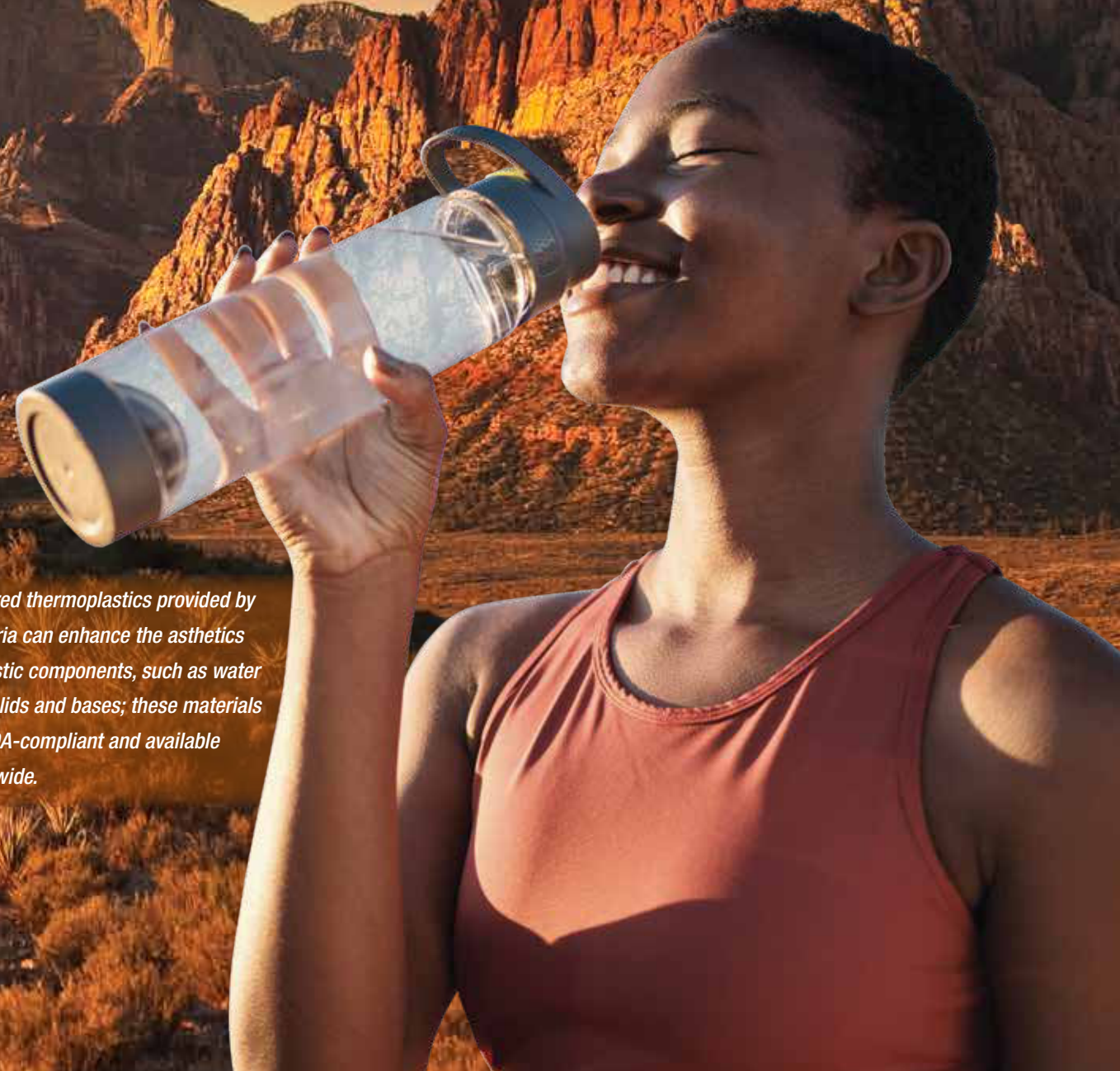


**PARCHED PLUM**  
S-781966 MB 4% | Polysulfone (PSU)



**DUST IN TIME**  
S-897347 MB 4% | Polysulfone (PSU)

*Coloured thermoplastics provided by Hueforia can enhance the aesthetics of plastic components, such as water bottle lids and bases; these materials are FDA-compliant and available worldwide.*



# Tropical

COLLECTION



**CLOWNFISH**  
S-483103 MB 4% | Polypropylene (PP)



**HOT TROPIX**  
S-501033 MB 2% | Polypropylene (PP)



**TANZANITE**  
S-903735 MB 4% | Polypropylene (PP)  
Pearlescent

Inspired by the lush beauty of the rain forest, the Tropical Collection radiates wild, vibrant hues, ideally suited for thermoplastics being molded into toys, sporting goods, and entertainment accessories.



*Hueforia engineers can develop material to fit the specific requirements of your application. For example, this rigid surfboard fin with an overmolded thermoplastic edge provides safety features and better board performance.*



**WATERFALL**  
S-709748 MB 2% | Polypropylene (PP)  
Translucent



**TYPHOON**  
S-709749 MB 2% | Polypropylene (PP)



**TREE FROG**  
S-600381 MB 4% | Polypropylene (PP)

# Temperate

COLLECTION

The sophisticated shades of the Temperate Collection bring a sense of quiet power, strength, and reliability to the plastic housings of electronic and medical devices, including wearables.



**LUKEWARM**  
S-781964 MB 4% | Polycarbonate (PC)



**BALANCE**  
S-709745 MB 4% | Polycarbonate (PC)



**NIGHTFALL**  
S-903732 MB 4% | Polycarbonate (PC)  
Metallic Large Flake



**DECIDUOUS**  
S-600380 MB 4% | Polycarbonate (PC)



**MEADOW-TATION**  
S-903731 MB 8% | Polycarbonate (PC)  
Pearlescent



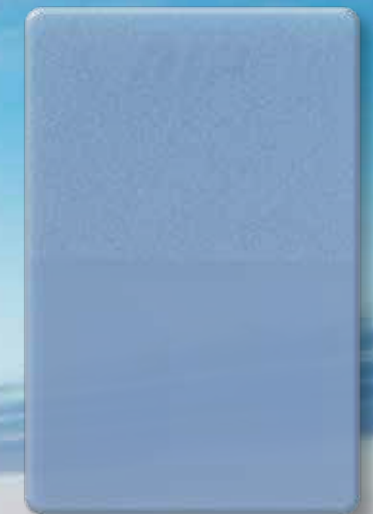
**WALNUT**  
S-34236 MB 4% | Polycarbonate (PC)

Everything from wheelchair gears to wearable medtech devices can benefit from the strength and wear resistance of coloured thermoplastic compounds that are specially formulated by Hueforia engineers.

Like the tundra from which they are derived, the colours of the Polar Collection make unapologetically bold statements for thermoplastic parts found in automotive and recreational vehicles.

# Polar

COLLECTION



**ARCTIC AIR**  
S-709746 MB 4% | Amorphous Nylon (PA)  
Translucent



**CRYOGENIC**  
S-709747 MB 4% | Nylon (PA)



**MULLED WINE**  
S-903734 MB 4% | Nylon (PA)  
Metallic Medium Flake



**ORCA**  
S-34237 MB 4% | Nylon (PA)



**SHIVER**  
S-903733 MB 8% | Amorphous Nylon (PA)  
Pearlescent



**SNOWSHOE**  
S-206780 MB 8% | Amorphous Nylon (PA)

*Hueforia engineers design thermoplastic compounds for vehicles that perfectly balance properties such as strength, wear resistance, weatherability, and aesthetics, including colour in smooth glossy or matte finishes.*



# Hueforia

Colour Development Team of RTP Company

The Hueforia Team at RTP Company is a group of experienced colour experts who provide:

- a fresh **perspective** and reliable recommendations,
- colour matching **expertise**, and
- **consistent** and **accurately-coloured** thermoplastics, worldwide.

Product designers, marketers, and brand professionals rely on Hueforia for sound advice through the design, production, and commercialization of their plastic products. Ready to get started? Let the Hueforia Team assist you throughout the process!

For more information, visit our website:

**[www.hueforia.com](http://www.hueforia.com)**



RTP Company Corporate Headquarters  
580 East Front Street | Winona, Minnesota 55987 USA  
[www.hueforia.com](http://www.hueforia.com) | 1.507.454.6900

Copyright RTP Company 2024 • 1/2024



CMG

RTP Company is a  
proud member of the  
Color Marketing Group.